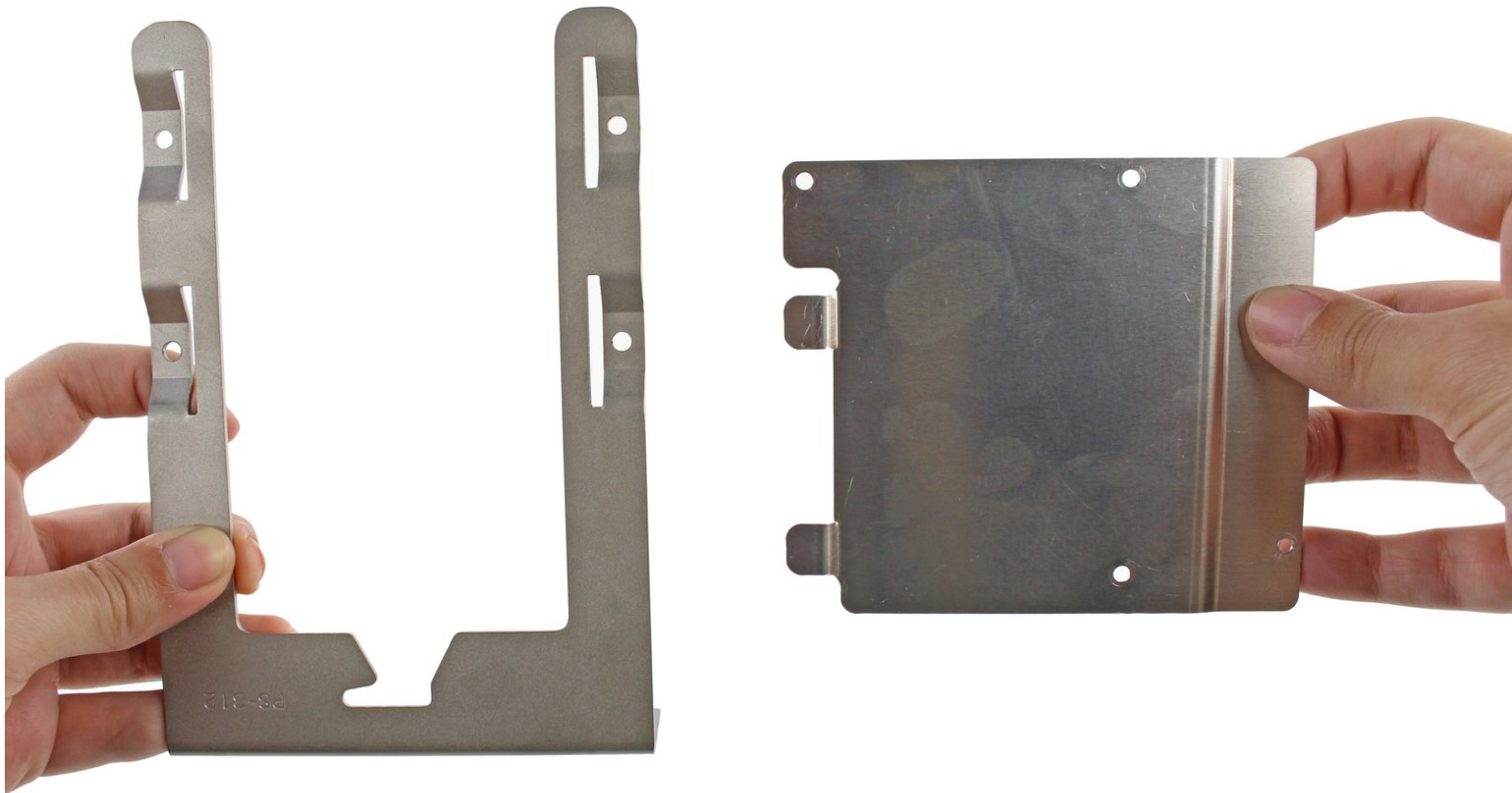




How to Install a Hard Drive Sled Adapter for Mac Pro First Generation

Assembly instructions for a Mac Pro First Generation Hard Drive Sled Adapter.

Written By: Kristen Gismondi



INTRODUCTION

These steps will guide you through the process of removing your hard drive and then assembling a new hard drive to a Mac Pro First Generation Hard Drive Sled Adapter. The existing hard drive bay sled brackets in this device are meant to fit 3.5" hard drives, but this adapter enables you to install any SATA 2.5" solid state, hybrid, or standard hard drive. It also correctly aligns the SATA connector to match the socket in your Mac Pro.



TOOLS:

- [Phillips #1 Screwdriver](#) (1)
- [Phillips #0 Screwdriver](#) (1)



PARTS:

- [Mac Pro \(1st Gen\) Hard Drive Sled Adapter](#) (1)

Step 1 — Case Panel



- Lift the lever to unlock the case.

Step 2



- Remove the side panel of the Mac Pro.
- ⚠ Discharge any static electricity by touching a grounded surface prior to working on any internal components.

Step 3 — Locate the Hard Drive Bays



- Locate the desired hard drive bay after opening the case .
- This is usually the drive closest to the front of the case.

Step 4 — Remove the Hard Drive Bay



- ⓘ Make sure that the clip used to release the side panel is open or the Hard Drive bays won't slide out
- Pull the Hard Drive straight out by grabbing the metal sled from the bottom. It may be hard to pull out at first, but after it gets released the sled shouldn't take a lot of effort to remove.

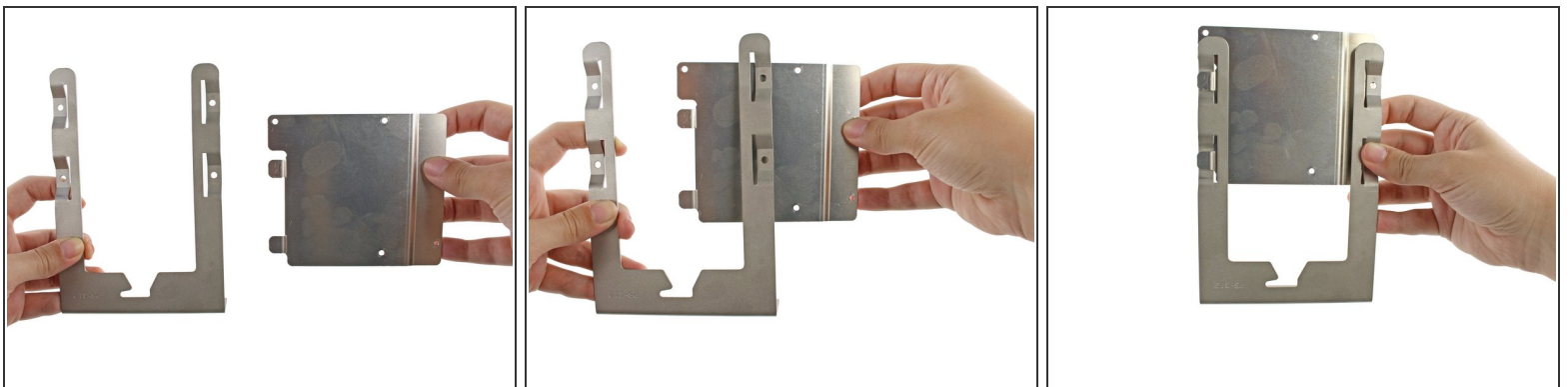
Step 5 — Remove metal Hard Drive sled



i When handling the hard drive hold it by the sled or sides be sure not to touch the green circuit board visible in all 3 pictures.

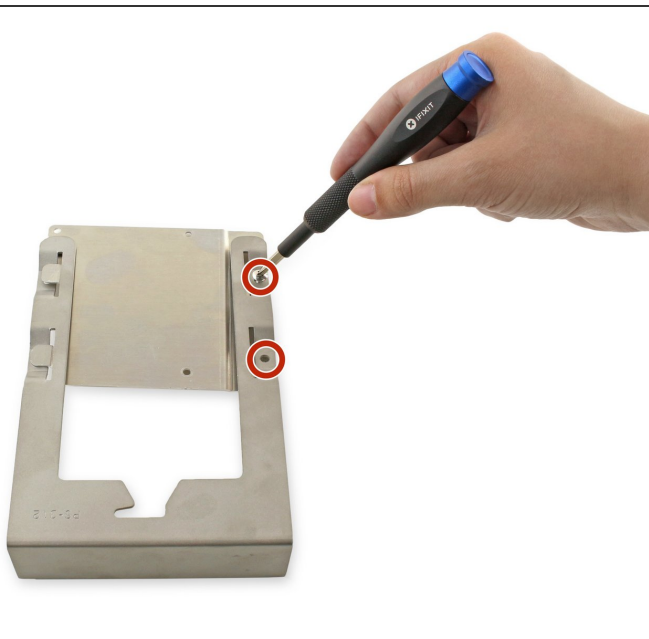
- Locate the four 6-32 type screws on the Hard Drive sled.
- Using a Phillips head screw driver remove the four screws and separate the metal sled from the Hard Drive

Step 6 — How to Install a Hard Drive Sled Adapter for Mac Pro First Generation



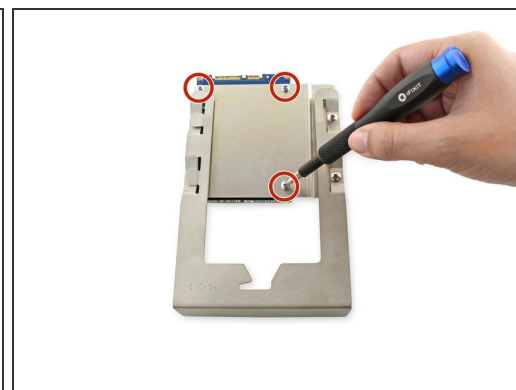
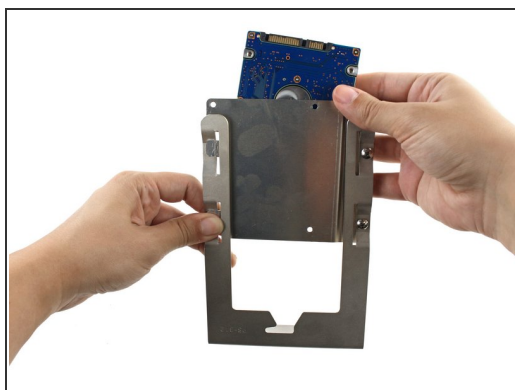
- Insert the two tabs on the left side of the metal adapter bracket into the slots on the left side of the hard drive bay sled.
- Align the holes on the right side.

Step 7



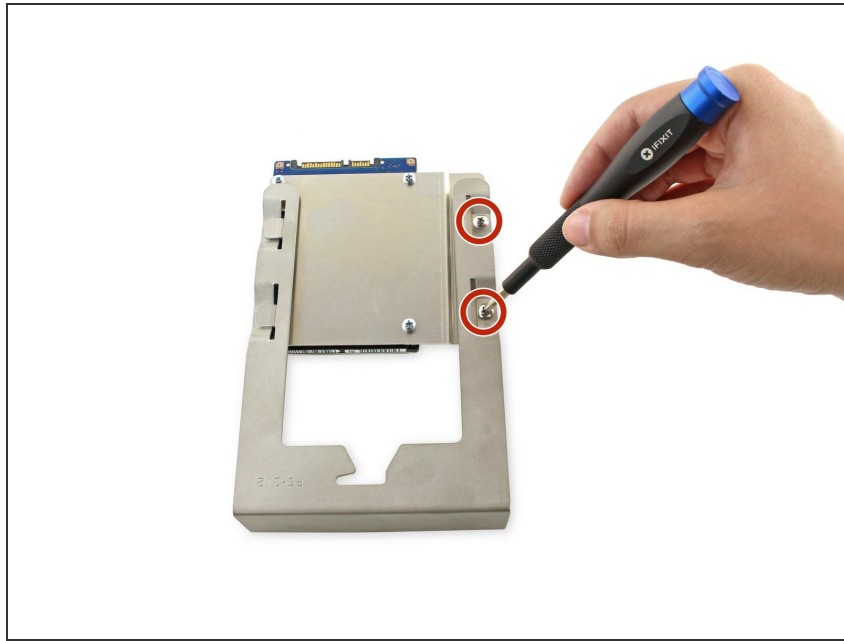
- Screw the two 7.8mm PH0 screws into the two holes on the right.
- ⓘ Leave these screws slightly loose; they will be tightened once the hard drive is attached.

Step 8



- Align the holes in the hard drive with the three holes on the bracket.
- Screw the three 6.1mm PH0 screws into the bracket and hard drive.
- ⓘ These screws can be secured tightly.

Step 9



- Tighten the two 7.8mm PH0 screws on the right side of the bracket.

To reassemble your device, follow these instructions in reverse order.